

Using Workgroup Manager with Active Directory part 2



In the first part we looked at how to setup an OSX Server as an OD Master to provide Workgroup Manager preferences to OSX Clients logging into Active Directory.

In part 2 we will look at the whole picture to provide an elegant, low administered, robust and flexible system.

We will use templating to define preferences on the client which are re-customizable and over-ridable using Workgroup Manager.

This setup is going to be using SMB for all share points including SMB Homes.

For the guide I will be using the following:

Windows 2003 Server running Active Directory, DNS and DHCP

Windows 2003 Server hosting all shares

OSX 10.4.4 Server as OD Master

IP list for the servers

AD Server – 192.168.1.5 Domain = SERVER.COM

SMB Shares Server – 192.168.1.6 Name = SHARES

OSX OD – 192.168.1.8 Name = OSXSERVER

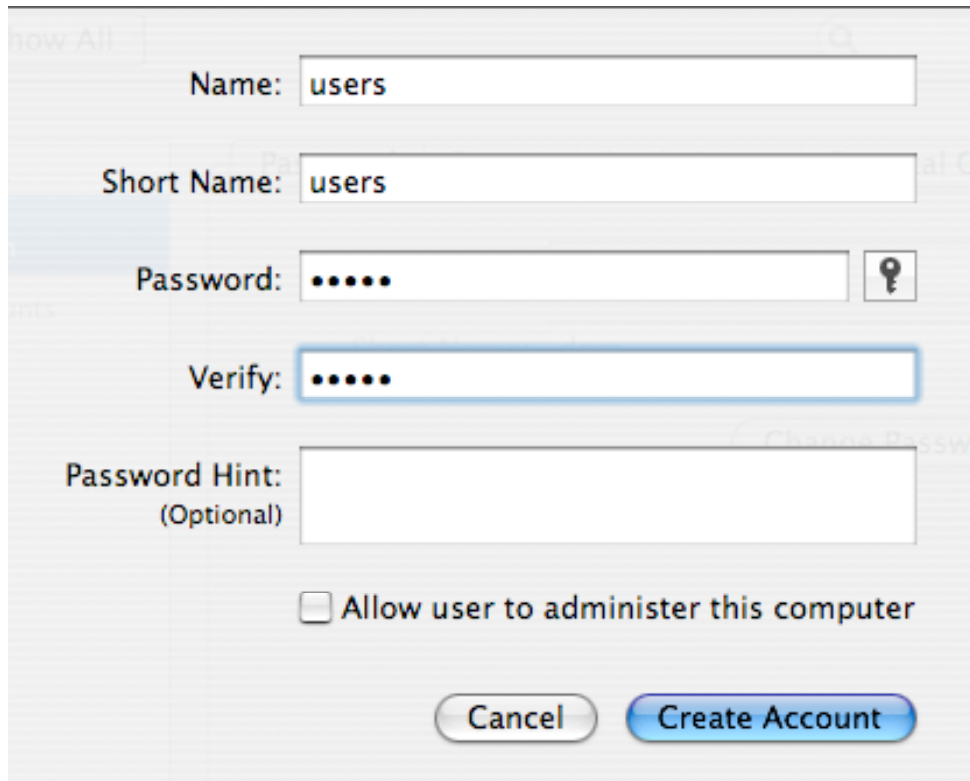
All Mac and Pc clients will be using DHCP

The downloadable application that I will be using is “Template” found at <http://www.apple-scripts.com/forums> under apps.

It is assumed that you have gone through the basic guide for setting up OD Master. Your clients have joined the Active Directory, OD authentication and Kerberos.

On the Client

Create an account called users.



The image shows a macOS 'Create New User' dialog box. It has the following fields and options:

- Name:** users
- Short Name:** users
- Password:** ••••• (with a key icon to the right)
- Verify:** •••••
- Password Hint:** (Optional)
- Allow user to administer this computer
- Buttons:** Cancel, Create Account

Log in as user.

Now we have a fresh setup, this is going to be our master template.

Open up home > Library > Preferences

Arrange by date modified

Move an application in or out of the Dock

com.apple.dock.plist has now jumped to the top of the list this is the preference file for what exists in the dock and in which order.

Set up the desktop and Dock however you like.

Open up an application like Microsoft Word (this can be any application).

As word starts up as a new user it will automatically copy all its fonts into users > Library > Fonts

As we are templating this user we need to make the template as small as possible.

Copy all the fonts from users > Library > Fonts to Library > Fonts any that are duplicated delete so we have an empty users > Library > Fonts folder.

Microsoft Word will have automatically created a preference files in users > Library > Preferences.

A folder called Microsoft within this folder com.microsoft.Word.plist

Making changes in Safari will edit com.apple.Safari.plist

Open up Word and change Preferences > File Locations > Documents

Select Modify and set the path to the Documents folder.

Open up Safari > Preferences and change the download location set a home page and enable tabs.

Close all windows

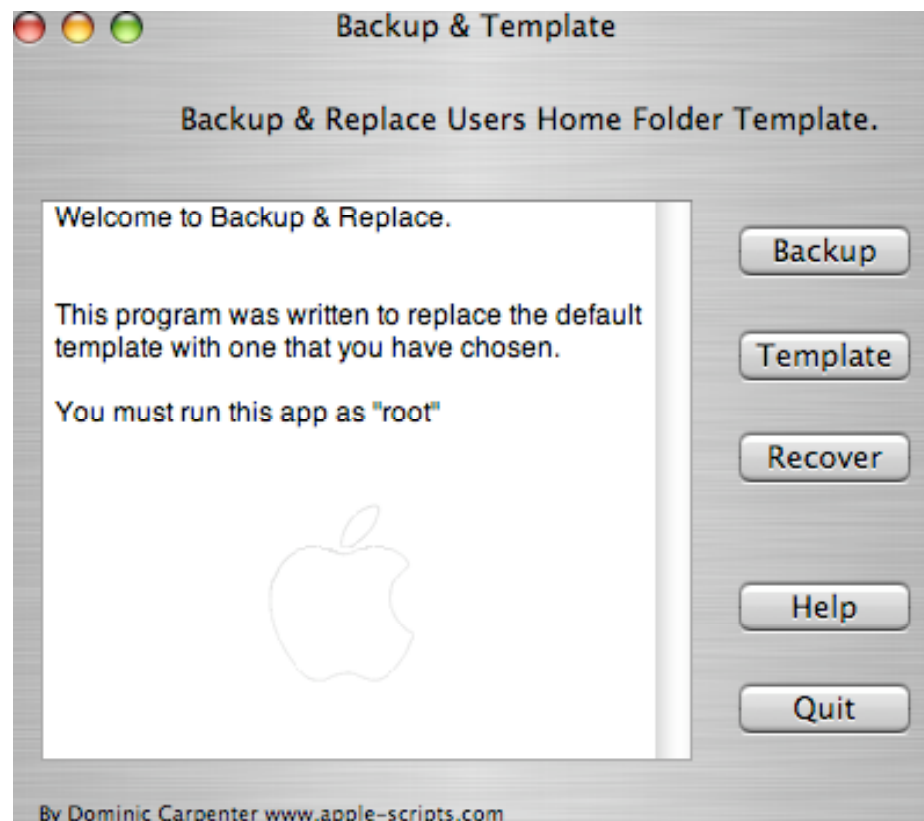
Now we have made some changes to the system, we can template.

Log out and log in as root

Navigate to the Users > users home folder > Library > Caches and delete all files

Download template.zip

Run the application



Click on Backup, just in case we want to go back to original template.

This program will overwrite the System > Library > User Template > English.Iproj with the new template.

Click on template and navigate to the Users > users home folder and select it and press choose.

Quit the template application.

Delete the users account from System Preferences > Accounts and delete immediately

If any other account exist in the Users folder other than your Admin account and shared delete those.

Now log in as an Active Directory network user you now have the exact settings that you setup before.

If you want to change any part of the template make your changes with any user that you are logged as and set the changes, login as root and run the application again and select whomever you were logged in as.

Now we are ready to combine Workgroup Manager with our templated user.

On the Active Directory

Create 3 Users

Test1	(Home)	//shares/homes/%USERNAME%
Test2	(Home)	//shares/homes/%USERNAME%
Test3	(Home)	//shares/homes/%USERNAME%

And 3 groups use global or Domain

Group1

Group2

Group3

Test1 is a member of group1

Test2 is a member of group2

Test3 is a member of group1, group2 and group3

Create 3 shares on your Shares server (for testing you can create them on the AD Server) with the following share / security permissions:

GroupShare1 - Group1 & Group3 and Admin

GroupShare2 - Group2 & Group3 and Admin

GroupShare3 - Group3 & Admin

Create another 3 shares called groupfolder1, 2 and 3

With the following share / security permissions:

groupfolder1 - Group1 and Admin

groupfolder2 - Group2 and Admin

groupfolder3 - Group3 and Admin

On the OSX Server

Open up Workgroup Manager.

Authenticated as LDAPv3

Create 3 groups

ODgroup1

ODgroup2

ODgroup3

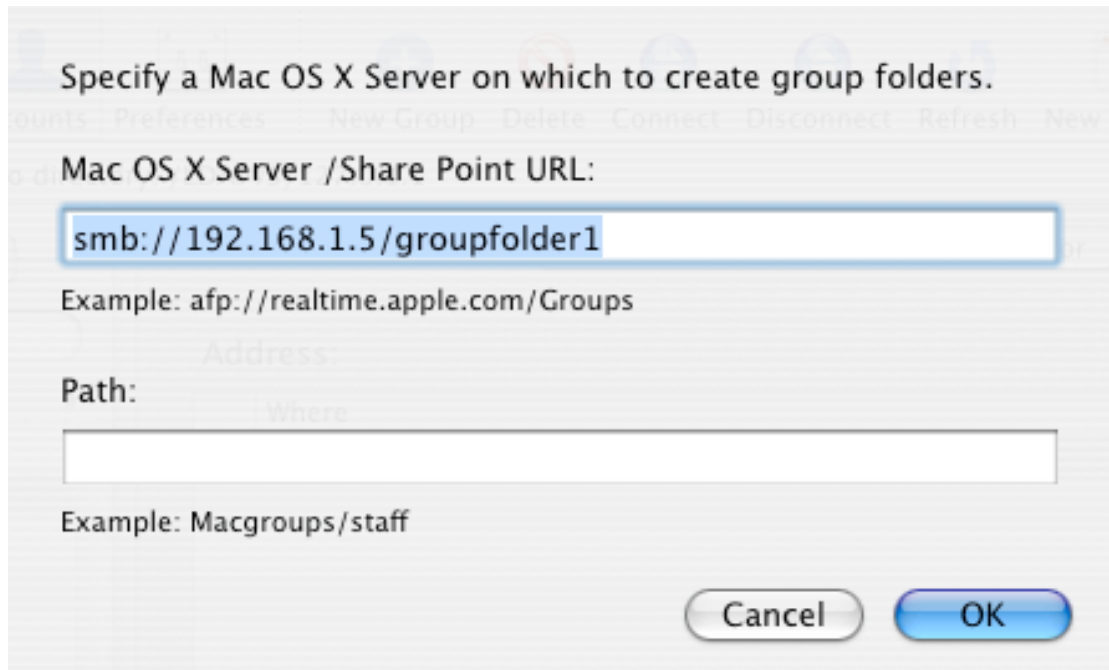
Add the Active Directory Groups to the ODgroups

ODgroup1 - SERVER\group1

ODgroup2 - SERVER\group1
ODgroup3 - SERVER\group1

Select ODgroup1 in accounts

On the Group Folder tab add a group folder



Do the same for all three ODgroups

Select ODgroup1 and Preferences > Login

And tick Add group share point

Hide	Item	Kind
<input checked="" type="checkbox"/>	groupfolder1	Volume
<input checked="" type="checkbox"/>	cifs://192.168.1.5/GROUP1	URL

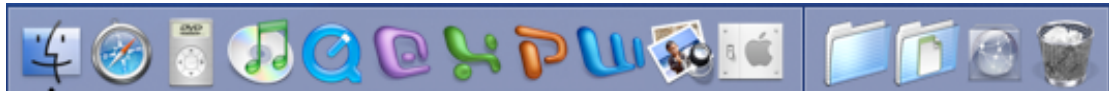
(If you have continued from the first Workgroup Manger with Active Directory you will still have the original groups shares set up)

Do the same for the other two ODgroups

On the Client

Login as each one of your three users

You should have the template settings that you defined and any modifications that made in Workgroup Manager including the shares on the Desktop and Dock



Experiment with the settings in workgroup Manager.

One thing to note.

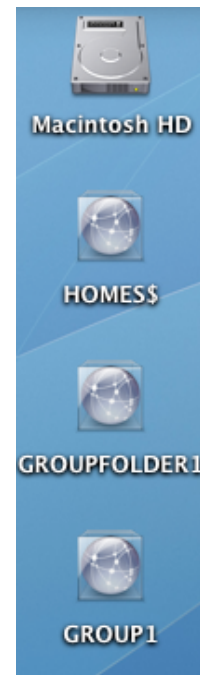
Workgroup Manager settings are applied after the templated settings so if you did need to change a setting latter on this is possible. Where as a typical templated system is general fixed unless you copy a new preference system around.

On the OSX Server

Open up Workgroup Manager

Select ODgroup1 and Preferences

Click the Internet Icon



Select the web tab and change Manage to Always.

Change the setting

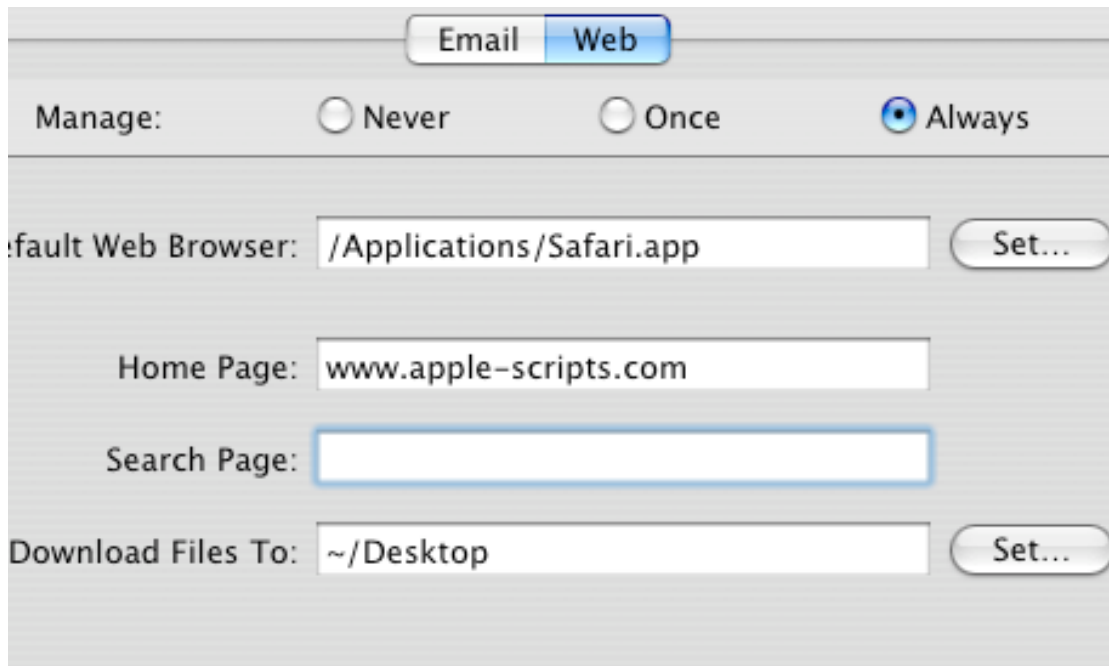
(We defined these in the Template and we just want to change them)

Define the default web Browser as Safari

Change the Home Page to something that is not entered into the templated Safari

Lastly change the Download File to location.

Apply the settings



On the Client

Log in as your test1 user

And open up Safari

Your Home page is now what ever you have defined in Workgroup Manager.

So what's next?

Computer Groups

You can use the Computer Groups the same as you would in Active Directory's Computers.

Defining preferences, scripts and access.

So why would you use Computer Groups over User Groups?

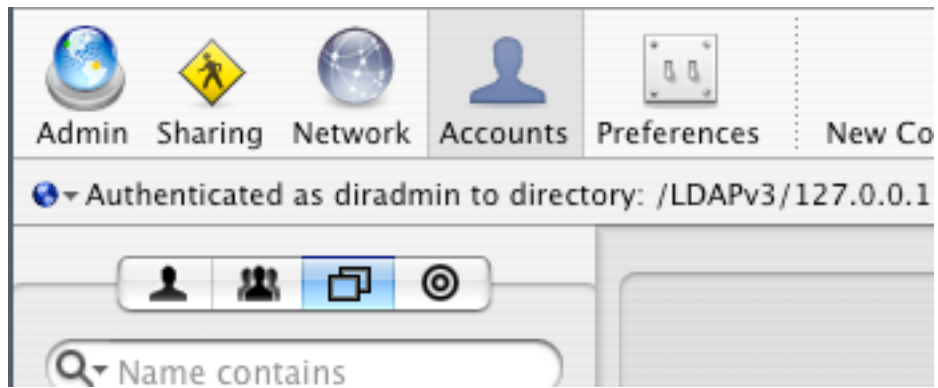
With Computer Groups preferences are defined to a group of computers identified through their MAC address.

This is useful for defining a printer to a specific room, ensuring that the login scripts run only certain computers or that restricted access is only restricted to set computers.

Lets start by creating a group.

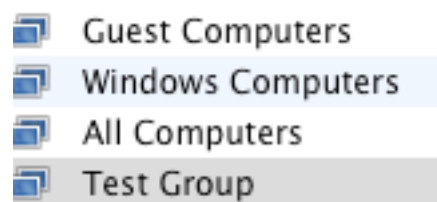
Open up Workgroup Manager

While Accounts is selected click on Computers



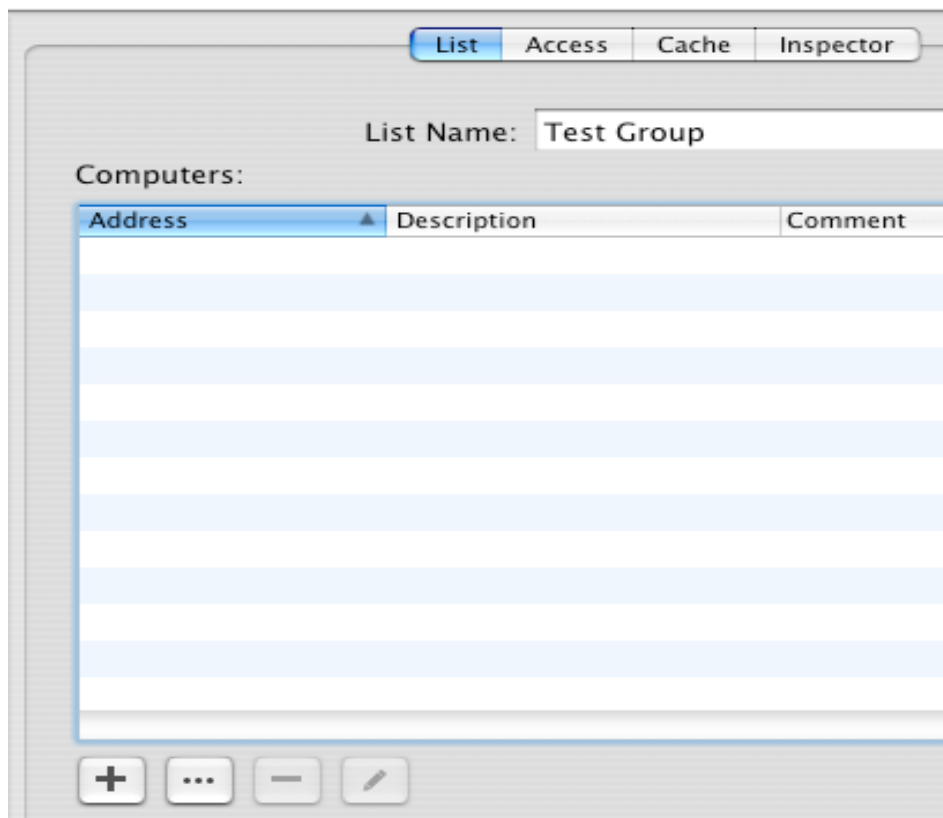
Click New Computer List

Create a list called Test Group



Select your new Test Group

Underneath the Computers: empty box select the icon with three dots.

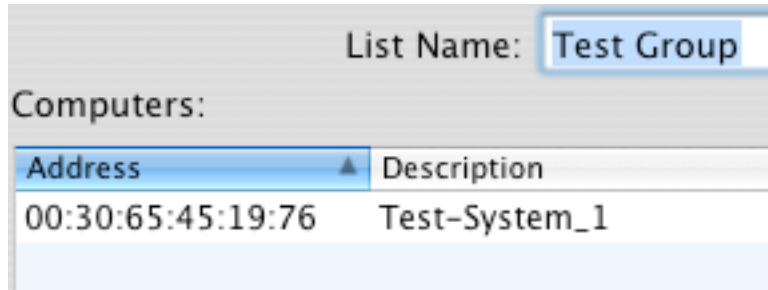


“Browse for computer records to add to this list”

You should see a list of computers.

Select your test client and press choose.

Your test client will have been added to the Computers: list.



Press save.

Select Preferences while your Test Group is highlighted.

Click on the Login Icon and select the tab Login Window.

Change Manage to Always.

Enter message in the Login Window Message box

Change:

Display Login Window as > Name and password text fields

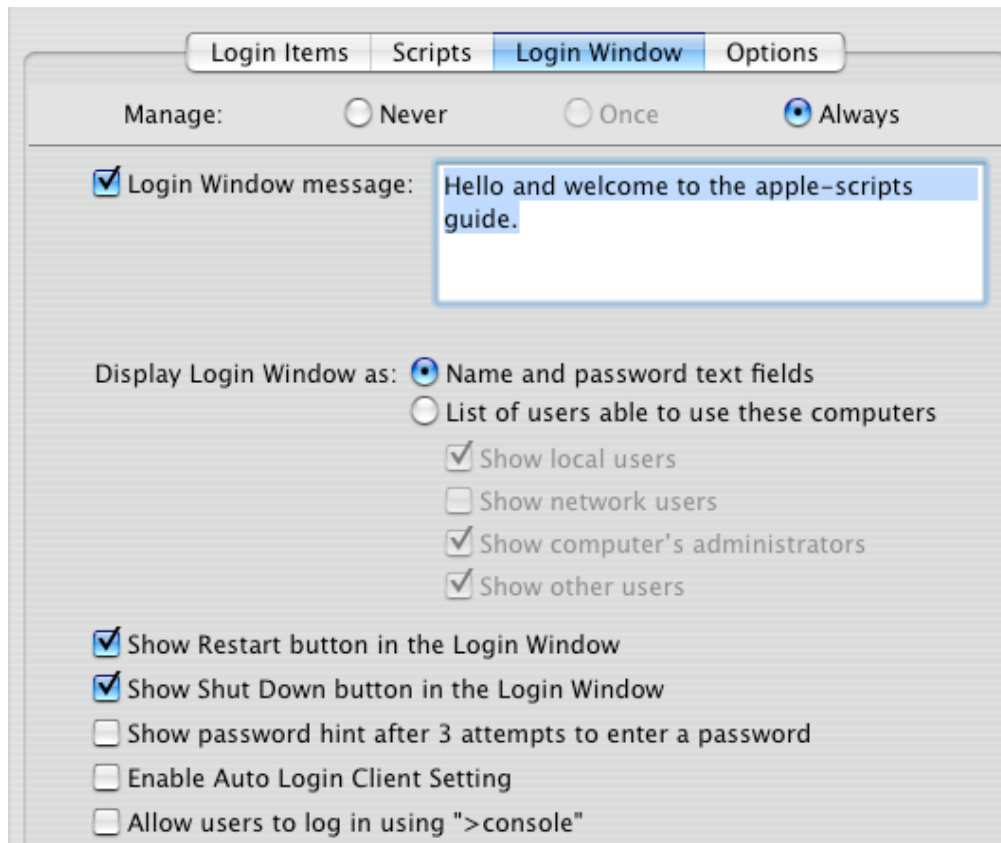
And only leave ticked:

Show Restart button in the Login Window Show

Shut Down button in the Login Window

Un-tick all other options.

Select Done.



On the Client

Log in as a user and log back out and the message on the login window will appear.

If the message does not appear restart the computer.

All preferences can be defined as they would for a group only this is for the computer regardless of who logs in.

On the OSX Server

Select your Test Group and Accounts.

On the Access tab change to Restrict to groups below and add ODgroup2

Un-tick Allow users with local-only account

On the Client

Login as test3

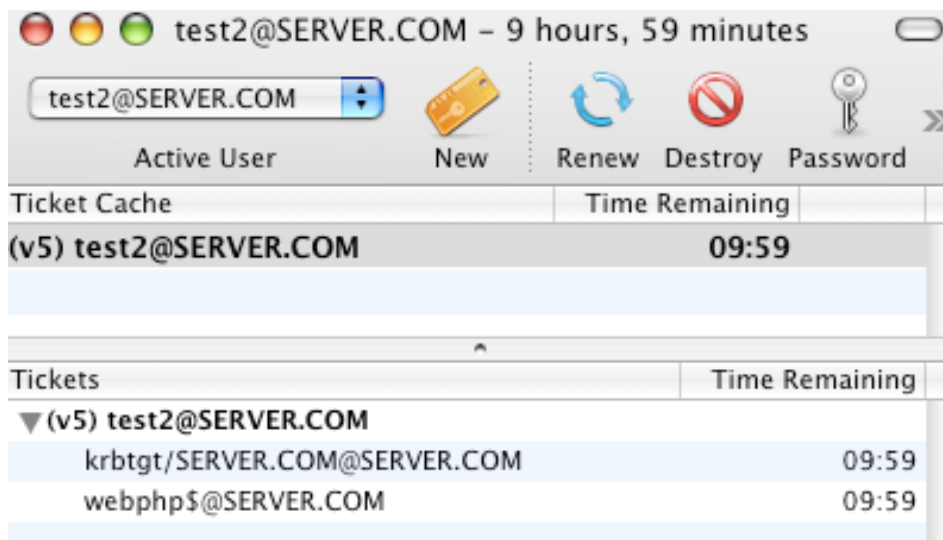
As test3 is not in the allowed list you will not be able to log in.

Changing Passwords.

As we are using Kerberos authentication this gives us the ability to change passwords in Active directory.

We can do this one of three ways.

Running the application in System > Library > CoreServices > Kerberos.app



Select Password icon



The second way is to invoke a password change at the login window.

On the Active Directory

Double click one on user - click Accounts – tick the option “the user must change password at next login”

Now when you try to login as that user you will be prompted to change your password.

The third way is to use the terminal using the command “kpasswd”

```
Terminal — bash — 80x24
Welcome to Darwin!
Test-System-1:~ test2$ kpasswd
Please enter the old password for test2@SERVER.COM:
Please enter the new password for test2@SERVER.COM:
Verifying, please re-enter the new password for test2@SERVER.COM again:
Password for test2@SERVER.COM has been changed.
Test-System-1:~ test2$ █
```

I hope you have enjoyed going through this step by step and all feedback would be welcome.

If you have any problems please post on <http://www.apple-scripts.com/forums/>

Please Download “Workgroup Manager with Active Directory part 3”

Looking at using Workgroup Manager with Active Directory utilising scripts and login programs to make the system a little more user friendly.



By Dominic Carpenter

www.apple-scripts.com